

VOL. 22 ISSUE 11

NOVEMBER 2022

# THE ECHO

*a newsletter of the First Christian Church of Morehead, Kentucky*

## President's column

MARY CLAIRE WILLIAMS



Hello Church Family,

October was a beautiful month to watch the seasons change, and the trees shedding their leaves is a good reminder that change is inevitable. This reminds me of one of my favorite Bible verses from the book of Ecclesiastes verse three: *To everything there is a season, and a time to every purpose under the heaven.* Our church family is full of many people experiencing different seasons in their life. We are also quickly moving into

the holiday season which can be a time of joy, but it can also be a time of sorrow for some. Let us remember to be gentle with each other through all the seasons of life.

In October, we hosted a youth reunion for all of our current and former youth. It was so nice to see everyone and reconnect for an afternoon. We had 19 who attended, and hopefully, we will do this again in the spring or summer. Additionally, we were blessed with Regional Minister, Rev. Dr. Donald K. Gillett, II providing the service with Pastor Nancy at our 135<sup>th</sup> anniversary celebration. The message was clear, "God is not through with us, yet." It was a very hopeful message for our church and each individual.

As we wrap up this month which is Pastor Appreciation Month, I would like to express my sincerest thanks to Pastor Nancy for all that she does for us individually, our families, our church, and our community. We truly struck gold when she answered our call, and I hope everyone thanks her for her hard work this month, AND ALWAYS. Let us not forget to always be in prayer for our dear pastor.

With Love,

Mary Claire Williams

mcwilliams326 (at) gmail (dot) com; (606) 776-8430

## This issue:

President's column  
PAGE 1

Outreach update  
PAGE 2

Calendar  
PAGE 3

Creation Care news  
All Saints worship  
PAGE 4

Giving & Thanks  
Youth Alumni gather  
PAGE 5

Pastor Nancy's note  
PAGE 6

MSU History  
PAGE 7

First Christian Church  
227 East Main Street  
Morehead, KY 40351

[www.fccmorehead.org](http://www.fccmorehead.org)  
(606)784-4836



# Outreach Updates

RONETTA & JEFF BROWN

## **Gearing up for Holiday Outreach at FCC**



### **Thanksgiving Baskets**

Mary Claire Williams will be working with our youth, purchasing food for Thanksgiving for 10 families served by Gateway Homeless Coalition. The youth will shop, sort, and deliver these items to the Homeless Shelter. If you would like to make a donation to help cover the cost of one of these baskets, please note that in your check's memo or online donation. Each year, we depend on donations from our congregation to support this important ministry. Each Thanksgiving basket costs approximately \$60.



## **Christmas Outreach Project**

Our Rowan County Schools Family Resource/Youth Service Center Directors have informed us that the needs of families in our community are many. This year, we will be providing clothes, shoes, household, and hygiene items, as well as food items for 53 Rowan County children from 12 different needy families. We will also serve households of 10 very needy elderly/homebound individuals. Each year, the congregation volunteers to purchase various food items for the families and elderly, as well as toys/gifts for the children. We will, once again, rely on the generosity of our congregation and friends to accomplish this monumental task and help give families in our area a better holiday. Sign-ups are available now, and we encourage you to do whatever you feel you can do. Monetary donations are welcomed, and you may earmark those as "Christmas Outreach" on your checks or online.

All donated items should be brought to the Fellowship Hall and placed on designated tables. Children's gifts/toys should be gift wrapped and tagged with the family letter, child number and age. For example: Family D, Boy #1, age 10. We will be delivering all items to families on Sunday, December 11th. Thanks in advance for your gifts and generosity!

**Childrens' Toys and Gifts Sign Up**

**Christmas Food for Families Sign Up**

**Christmas Needs for the Elderly/Homebound Sign Up**

In other Outreach news...

*Thanks to everyone who donated hoodies for Rowan County middle and high school students!*

## **Firewood Ministry**

Bob and Lucy Pryor, Dan Thomas, Jeff and Hayden Brown, Ethan Jenkins, Tom Carew, Ed Scott, and Kent Freeland have been working on cutting and splitting firewood for needy families through our firewood ministry, which runs throughout the fall and winter. Contact Bob Pryor for more information if you are interested in getting involved.

## **Gateway Baskets**

Jeff Brown has delivered the last housewarming items for this year to the Gateway Shelter. This ministry will resume with new signups in February.

## **New Outreach Member**

We would like to welcome Racheal Adekunle to the outreach committee! We are so happy to have Racheal join us in this important work.

***Our next meeting will be Wednesday, November 2nd, at 6:00 pm in the Fellowship Hall. We always welcome new members to our committee. Feel free to join us at the next meeting if you are interested.***

# November 2022

	Mon	Tue	Wed	Thu	Fri	Sat
		1 7:00pm Worship team meeting 7:00pm Women of the Bible (Zoom)	2 5:00pm Bells 6:00pm Outreach Committee Mtg 7:00pm Choir 8:00pm Christmas Cantata rehearsal	3 7:00pm Vespers (Zoom)	4 Regional Assembly, Georgetown  Office closed.	5 Regional Assembly, Georgetown
6 10:45am Worship All Saints Remembrance 2:00pm Creation Care Trail work	7  1:00pm PRC Committee Meeting	8 Election Day  7:00pm Women of the Bible (Zoom)	9 5:00pm Bells 7:00pm Choir 8:00pm Christmas Cantata rehearsal	10  7:00pm Vespers (Zoom)	11 Veterans Day  Office closed.	12
13 10:45am Worship 12:15pm Elders' Meeting	14  Committee Meeting	15  7:00pm Women of the Bible (Zoom)	16 5:00pm Bells 7:00pm Choir 8:00pm Christmas Cantata Rehearsal	17  7:00pm Vespers (Zoom)	18 19 Youth Fall Lock In—Mailbu Jacks, Lexington Office closed.	19 Youth Fall Lock In—Mailbu Jack's, Lexington
20 10:45am Worship	21  	22  7:00pm Women of the Bible (Zoom)	23  	24 Thanksgiving Day  Office closed.	25  Office closed.	26
27 <b>ADVENT I</b> 10:45am Worship Newsletter articles due.	31 6:30pm Exec Bd Mtg. (Zoom) 7:00pm Full Bd Mtg (Zoom)	29  7:00pm Women of the bible (Zoom)	30 5:00pm Bells 7:00pm Choir 8:00pm Christmas Cantata Rehearsal			

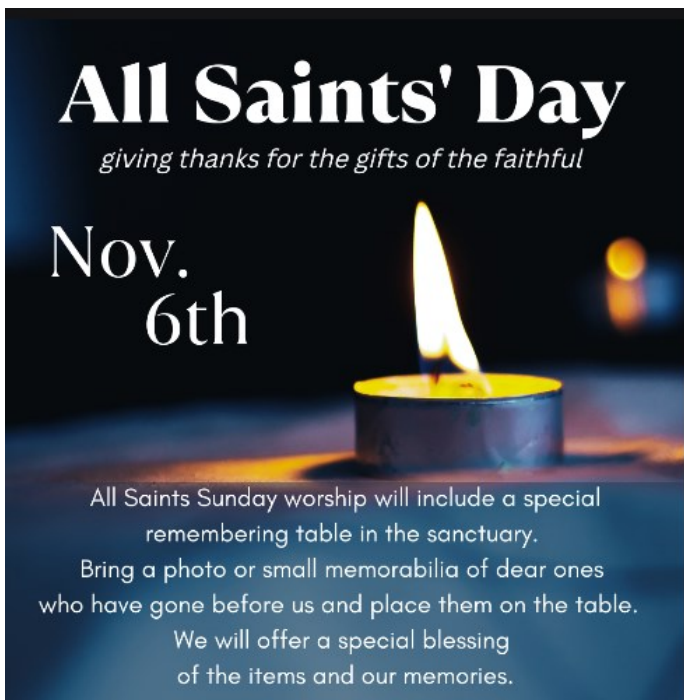




## All Saints' Day

REMEMBRANCE—NOVEMBER 6

In addition to our remembering table, we will lift up the names of congregational members and loved ones who have died in the past year during our worship. If you would like to have a person remembered in prayer, please share the individual's name with the [church office](#).



## Creation Care

MARK ETHERTON

Trail clean up will continue on November 6 near Cave Run Lake at the Boat Gunnel trail. It is their mission to care and protect God's earth. Members clean, trim, and remove debris for the safety and enjoyment of trail walking and hiking.



Floral Arrangement on October 23, 2022  
for the 135<sup>th</sup> Anniversary  
of First Christian Church of Morehead  
were given by Warren M. Garrison, Jr.  
*in honor of*

**Margaret (Muff) Penix Scott**

**Robert B. Scott**

**Mrs. Ethyl Fisher Peratt & Mr. Charles O. Peratt**

**Frances Peratt Garrison**

**Warren M. Garrison**

**Ann Rogers Garrison Greenleaf**





# Giving News

## THANK YOU

Dear Pastor Nancy & FCC Family,

Thank you so much for my Bible! It means so much to me. I will always remember getting it! Thank you so much!

Love,

Ellie Williams

Dear Church Family,

Thank you for the Bible that I got at the outdoor service. I deeply appreciate it. It has motivated me to learn more about God and is showing me how to be a better Christian. Thank you all for the love you show me. I am happy to be a member of our church.

Sincerely,

Alana Sholar

## Youth Reunion

OCTOBER 9, 2022



Nineteen youth members and guests joined Mary Claire Williams and Christ Prichard for the Youth Reunion. Plans are for another gathering in 2023.



## TREASURER'S REPORT NOVEMBER

General gifts and income  
for the first 4 Sundays  
of October:

\$10,198.40

*includes AmazonSmile  
donation of \$6.99*

Expenses:

\$11,824.08

## MACK FUND

*For the Turtle Walk Turtle sculpture*

Marge and Dan Thomas



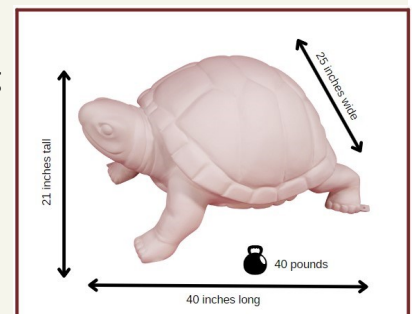
## Turtle Walk 2023 UNVEILING

First Christian Church along with 19 other sponsors are awaiting the arrival of turtles...turtle statues to be more precise. The one-of-a-kind statues will be painted by local and regional artists chosen by a private jury and paired with each sponsor. Each finished turtle will be installed in a location designated by its sponsor.

The Turtle Walk project was developed by Morehead-Rowan County Tourism with help from LexArts in Lexington. The turtles commemorate the Sheltowee Trace National Recreation Trail. Sheltowee, means Big Turtle, the name the Shawnee people gave to Daniel Boone.

To contribute to the FCC Sheltowee trail turtle, mark your donation for the Mack Fund.

The turtles will be placed along the Sheltowee Trail along Main Street in the Morehead Historical District.



# Notes from Pastor Nancy

REV. NANCY GOWLER



*There is a kindness that dwells deep down in things; it presides everywhere, often in the places we least expect. The world can be harsh and negative, but if we remain generous and patient, kindness inevitably reveals itself. Something deep in the human soul seems to depend on the presence of kindness; something instinctive in us expects its, and once we sense it we are able to trust and open ourselves.*

—John O'Donahue

*To Bless the Space Between Us: A Book of Blessings*

There are times when I read John O'Donahue's words on kindness and fear he is terribly mistaken. Stories of violence fill our airwaves; hateful words swirl in our society, wielded as weapons designed to silence and sideline others. We are days away from another election, and some elected officials and politicians shamelessly deploy racism and fear-mongering intending to motivate voters by their basest instincts. Ugly, fantastical rumors swell like wildfires, spreading across social media, while news on the very real challenges we face as a country suffer from lack of attention. At moments like these I tend toward despair, feeling deep down that the words of the poet Maggie Smith in her poem, "Good Bones," may be more true than O'Donahue's,

*...Life is short and the world  
is at least half terrible, and for every kind  
stranger, there is one who would break you,  
though I keep this from my children....*

And yet.

Perhaps I am despite what I fear, surprisingly an optimist at heart, or merely naïve to a fault. Whenever I teeter on the abyss of despair, just when my cynicism thinks it's won the day, something pulls me back. A fierce defiance rises up, just enough to push back against the forces of gloom. A spark of what might be hope appears, oftentimes in places I least expect to find encouragement.



Regional Minister Rev. Dr. Don Gillett, II, with Pastor Nancy after FCC's 135th Anniversary Celebration.

A few weeks ago I attended the 2nd annual Justice Festival at Morehead State University. Along with MSU students and staff, there was a class of high school students in attendance. Now, in the news you may read about the post-pandemic decline of test scores or in casual conversation it is often said that this generation is lazy and unengaged. The kids present at the Justice Festival upended those negative stereotypes. In workshops they asked insightful questions, brought facts to the conversations, and a tangible passion to issues which directly affect their lives. They were a real life embodiment of the lyrics of the Broadway hit, *Hamilton*, "With every word, I drop knowledge. I'm a diamond in the rough, a shiny piece of coal." Faced with the realities of injustice in the world, these high school students weren't despairing; they were fired up and ready to rise up!

As I left the Justice Festival, I realized that for all the helpful information presented, what I had really needed that day was that the students from that high school class. In their passion I found an ember of resistance inside me, refusing to give up. I suspect Maggie Smith can't quite let go of hope either, for her poem ends with a comparison to a realtor, walking prospective buyers through a fix-it-upper and the openness of a future yet to be,

*"This place could be beautiful,  
right? You could make this place beautiful.*

We could indeed make this place beautiful—one deviant act of kindness, one brave bit of good trouble at a time. May it be so.

# History Corner

ANNE BUCKNER



## Morehead Normal School and Moonlight Schools 1910-1922

*A Continuing Look Back at MSU Beginnings*

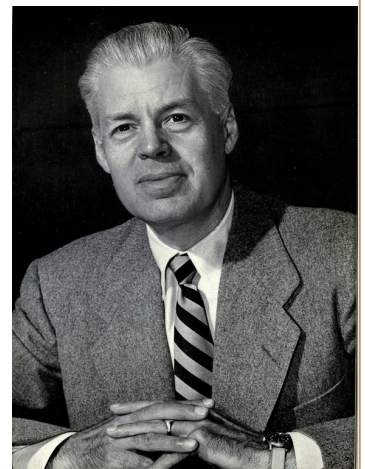
(an excerpt from [\*A Light to The Mountains\*, by Donald F. Flatt, pp. 24-25](#))



Cora Wilson Stewart attended and later taught at Morehead Normal School. While serving as superintendent of Rowan county schools in 1911, she organized the "Moonlight Schools," the forerunner of adult education in the U.S. and the world.

Although teachers expected 150 students the first year, 1,200 persons, ranging in age from 18 to 86, attended Moonlight School. The second year 1,600 enrolled. At the end of the third year, by Moonlight Schools' founder, Cora Wilson Stewart's count, illiteracy in Rowan County had dwindled from 1,152 to 23. In 1914, the U.S. Commissioner of Education recommended to Congress that the Moonlight Schools become a model for the instruction of the 5.5 million across the nation who could not read. In the late 1920s President Herbert Hoover appointed Stewart to chair the Executive Committee on Illiteracy. She also presided over the illiteracy section of the World Conference on Education.

A second outstanding example of what Morehead Normal School meant to young people was Harlan H. Hatcher, one of the most ambitious and successful graduates ever produced by the institution. Harlan, whose father was a teacher, was born in Ironton, Ohio, but his family moved to Ashland, Kentucky. He came to Morehead on the advice of his father and completed his secondary training in 1918 in time to serve in the



Harlan H. Hatcher (photo from 1954 *Michiganensian*, Wikipedia.org)

military during the latter stages of World War I. After he returned from the war, he took only eight years to earn his B.A., M.A., and Ph.D. degrees at Ohio State University. Hatcher was professor of English, dean of the College of Arts and Humanities, and academic vice president at Ohio State from 1928 to 1951. He then finished his distinguished career as president of the University of Michigan from 1951 to 1967. During that era, Michigan more than doubled its enrollment and took its place as one of the major research institutions in the United States. Hatcher, recipient of 35 honorary doctorates, published twenty books. When invited back to Morehead in 1995 to receive an honorary doctorate, Hatcher, then 97 years old, declined with regret, noting that the commencement date conflicted with a speaking engagement.

Another Hatcher was principal of Morehead Normal School during WWI. J. Wesley Hatcher, not related to Harlan, left Toledo, Ohio, where he was a popular Christian Church minister and moved to Eastern Kentucky to preach at the West Liberty Christian Church. During his tenure he accepted an invitation to minister at Morehead and to serve as principal of the Morehead Normal School from 1913 to 1919. Enrollment reached 357 during his second year with 10 faculty members in addition to the principal. Hatcher started a model rural school in a little cottage on campus as a demonstration of a mountain school, with its evening school for adults. For J. Wesley Hatcher, as with other principals before him, the chief concern of the school was to prepare young people to establish Christian homes and to become leaders in Bible school and church, in addition to preparing them to be teachers. But Hatcher was also pleased with the popularity of two courses not connected with religion: a class in physical culture, which met each morning at 5:30am for an hour-long drill, and a special lyceum course, which introduced students to the world outside the mountains.



J. Wesley Hatcher (photo from Berea College, The Chimes, 1946)



## Advent Begins November 27



The stories, scriptures, and traditions of the Christmas season have been passed down to us throughout the generations. Many of us enter this season with a swell of memories and emotions as vast as the cultural and religious rituals the holiday holds. Like a tapestry woven throughout time, the Christmas story weaves us in—to remember how God has shown up in the past, to continue the work of collective liberation, to behold the presence of God in flesh and bone. The work of

God is always unfolding—in and through us. This Advent, may you remember that you belong—to a story etched into the wrinkles of time, to generations that have come before and will come after, to a love that won't let you go.

Look for more information on Advent activities and materials in upcoming issues of our weekly e-Blast newsletter.



Happy Birthday  
**NOVEMBER**

- 1- David Perkins
- 5- Neva Griffith
- 6- Marge Thomas
- 9- Carrie Frazier
- 10- Maggie Miles
- 12- Wiley Tanner
- 22- Ellie Williams
- 24- Jim Gross

**FIRST CHRISTIAN CHURCH**  
227 East Main Street  
Morehead, KY 40351

