

THE ECHO

a newsletter of the First Christian Church of Morehead, Kentucky

President's column

MARY CLAIRE WILLIAMS



Happy New Year, Church Family,

The Advent season has ended with the birth of our baby Jesus who brings us so many special gifts. We are now awaiting the Epiphany. Each year our church honors the Epiphany with stars given to each church member with a special meaning for the year to come. This is one of my favorite traditions at our church. Ellie

and I are so excited to pick our stars and think about what the new year will bring. The start of a new year feels hopeful, and it's nice to reflect on all that was accomplished in the previous year. Sometimes that accomplishment is just making it through the year and other times it can be achieving an important goal. Wherever you are, I hope this new year brings you whatever you need and more.

I am very thankful for all of the hard work of everyone in the congregation to make our holiday outreach successful. The season is about giving and bringing hope to others. I believe that our church does just that in the holiday season and beyond. We are truly a movement for wholeness in a fragmented world, and it takes each one of our gifts to make a whole.

Blessings for you and yours in the new year!

With Love,
Mary Claire Williams
mcwilliams326 (at) gmail (dot) com; (606) 776-8430



This issue:

President's column
PAGE 1

Outreach Update
PAGE 2-3

Calendar
PAGE 4

Giving & Thanks
PAGE 5

Pastor Nancy's note
PAGE 6

MSU History
PAGE 7

First Christian Church
227 East Main Street
Morehead, KY 40351

www.fccmorehead.org
(606)784-4836



Outreach End of Year Wrap up

REACHING OUT THIS HOLIDAY SEASON

Whom we serve...

Each fall, we ask the local school Family Resource/Youth Service Center Directors to refer families who have great need and are not likely to be helped by other agencies during the holidays. These families are the ones we serve with our holiday outreach project. This year, each school referred two families. Typically, there are anywhere from two to six children in each family; however, this year one family had 11 children. Our total number of children served this Christmas was 53 kids from 12 families. This was an increase of 10 children over last year.

We also help 10 individuals who are elderly/homebound and have very limited resources. We have a contact who works with these folks and delivers the much-needed items to them before Christmas.

Many Thanks...

Thank you to everyone who donated money to this project. We had many donors who do not attend FCC; but we consider them part of our extended church family. We have annual donors, as well as folks who responded this year when they became aware of the scope of our project. We definitely could not do this without the monetary support of so many! If you donated money, here is what your donations funded:

- 22 Laundry baskets
- Cleaning and hygiene supplies for 12 families and 10 homebound/elderly individuals (laundry detergent, paper towels, general purpose cleaners, sanitizing wipes, toothpaste, shampoo, deodorant, soap, body wash, etc.)
- 53 Pairs of brand new children's shoes
- Underwear and socks for approximately 50 children
- 53 new coats, jackets, or hoodies
- New pajamas for at least 50 children
- New jeans, leggings, or athletic pants for 53 children
- New tops or sweatshirts for 53 children
- Gloves, toboggans, and mittens for children who indicated a need for them.



Delivery to Elderly: Greg, Cameron, and Penny Adkins.

Many of you also donated food items, which were added to the baskets.

Every year, we also buy toys/gifts for the children in each family. This year, we had so many children that we were concerned some might not get a gift sponsor. Outreach Committee members decided to reach out to their own families and friends to help get each child a sponsor. The response was overwhelming! At least a dozen children were sponsored by our "extended FCC family". Some folks live as close as Lexington, and some as far away as Denver, Colorado! For most of these families, the gifts we give the children will be their ONLY Christmas gifts this year. We are SO thankful to EVERYONE who sponsored a child and made their Christmas very special!

Shopping, Wrapping, and Delivering ...

Outreach Committee members divide the shopping duties. We were able to save approximately \$4,000 by utilizing discounts and Black Friday sales, getting 60% off most clothing items. This year, the following people did the shopping:

- **Shoes:** Marge and Susan Thomas and Maggie Alden
- **Underwear/Socks:** Genny Jenkins and family
- **Clothes:** Jeff and Ronetta Brown and Karen Kidwell
- **Hygiene items:** Connie Kibbey
- **Household Cleaning Supplies:** Sarah, Rex, and Lee Chaney



Deliver to families: Genny Jenkins.

and New Year Opportunities

The following folks spent an evening wrapping shoes:

Alicia, Dewayne, and Brian Carter, Eva Johnston, Elizabeth Ash, Connie Kibbey, and Rachel Adekunle

Joyce Marin helped sort items prior to delivery and Fran Helphinstine recycled all the many boxes, bags, etc.

Delivery Day...was a huge success, thanks to the following people:

Elizabeth Ash and Connie Kibbey, who helped load cars.

Drivers and Deliverers: Mark Etherton, Kim Reeder, Joe Barrett, Genny Jenkins, Joyce and Carlos Marin, Yvonne Baldwin, Anne Buckner, Alana Sholar, Bob Pryor, Dewayne and Alicia Carter, Eva Johnston, Jiyeon McGillicuddy, Jeff and Ronetta Brown.

Delivering to the families we serve can be very eye-opening. Living conditions are challenging at best. Many folks are just barely surviving, some living in travel trailers or campers, all of them doing the best they can in their circumstances. Our prayers will continue for the friends we serve, especially during the frigid temperatures of Christmas, and in the coming winter months as well.



Delivering to families: (l to r) Kim Reeder, Mark Etherton, Liz Ash, Connie Kibbey

MOVING INTO THE NEW YEAR

Gateway Housewarming Baskets

Now on to a new year. February through October we furnish a basket for folks transitioning from the Gateway Shelter to a home. These are sometimes singles, but many are families with children and jobs. The baskets contain new items such as sheets, towels, rugs, pots, dishes, microwave, etc. The average cost per basket is \$300.

Gateway Shelter serves five counties and transitions 6-10 households per month. The staff does follow ups with these families and the success rate is 90%. In December 2022 the shelter was operating at full capacity. What a tremendous asset this agency is to our community.

Signups for Gateway Baskets are available at the Sign-up Genius link below. If you would like to help out with this or other projects, contact any of the Outreach Committee members. There is no end to the assistance we can give.

<https://www.signupgenius.com/go/70A0A4AAAAE2EAAFE3-gateway>

Snack Backpack Program

We continue to need your support for snack backpacks, both through monetary donations and donations from the Kroger Smile program. The snack backpack program sends home nutritious snacks each weekend for at least 70 children in Rowan County. Food insecurity is an unfortunate reality for so many children, especially in these challenging economic times. Your assistance with this program is greatly appreciated!

Our next Outreach Committee Meeting is scheduled for Wednesday, January 18th, at 6:00 pm in the Fellowship Hall.

Please contact any Outreach Committee member for information or help you may be able to offer: Ronetta and Jeff Brown-chairs, Ashley Adkins, Elizabeth Ash, Alicia Carter, Sarah Chaney, Genny Jenkins, Connie Kibbey, Bob Pryor, Marge and Susan Thomas, Rachel Adekunle and Joyce Marin.

Visit our website, fccmorehead.org to see more pictures from this year's Christmas Outreach project.

January 2023

	Mon	Tue	Wed	Thu	Fri	Sat
1 New Year's Day 10:45am Worship	2 Office closed.	3 7:00pm Women of the Bible (Zoom)	4	5	6 Office closed.	7
8 Epiphany celebrated 10:45am Worship	9	10 7:00pm Women of the Bible (Zoom)	11 MSU Class Scheduling 7:00pm Choir	12 MSU Class Scheduling 7:00pm Vespers (Zoom)	13 Office closed.	14
15 10:45am Worship	16 Martin Luther King Jr. Day Office closed.	17 MSU Semester begins. 7:00pm Women of the Bible (Zoom)	18 6:00pm Outreach . (Fellowship hall) 7:00pm Choir	19 7:00pm Vespers (Zoom)	20 Office closed.	21
22 10:45am Worship Newsletter articles due.	23 6:30pm Exec Bd (Zoom) 7:00pm Full Board (Zoom)	24 7:00pm Women of the Bible (Zoom)	25 7:00pm Choir	26 7:00pm Vespers (Zoom)	27 Office closed.	28
29 10:45am Worship 5th Sunday Offering for Christian Care Com	30	31 7:00pm Women of the Bible (Zoom)				

Thank You

Dear Friends,

My heart is full. Thank you so very much for the generous Christmas gift, for the lovely birthday gifts, and kind words shared. I am thankful for all of you and for this congregation. I remain humbled by the call to serve alongside each of you in ministry.

Gratefully,
Pastor Nancy

Dear Congregation and President Williams,

Thank you for the Christmas gift. It is very much appreciated in knowing the support it represents. I am committed to the mission of First Christian Church and will always strive to do my best to represent our Christian values and to support the congregation. I am proud to be your secretary.

Sincerely,
Barbara Marsh

Women's Bible Study

TUESDAYS 7:00PM—ZOOM



The Women's Bible Study group will be studying the book of Psalms and reflecting on scripture readings on peace as we start the 2023 year!

Join us on January 3 by letting the church office or Sarah Chaney know.

Giving News

TREASURER'S REPORT DECEMBER

General gifts and income \$ 6,714.04
(includes AmazonSmile donation of \$14.00)

Expenses: \$12,683.87
(Christmas Day Dec. 25 service canceled and payments for organ maintenance and insurance were made.)

5th Sunday Offering Jan. 29

For Christian Care Communities

Enhancing the journey of life for older adults
since 1884.

[Christian Care Communities](http://www.christiancarecommunities.org)



FIRST CHRISTIAN CHURCH
OF MOREHEAD

January Birthdays

- 4- JANE HOLBROOK
- 11- MILES PASCHALL
- 14- JEAN BATTSON
- 21- DEWAYNE CARTER
- 23- MARK ETHERTON
- 24- HOLLY POLLOCK
- 25- TOMMY GRIFFITH
- 27- GINNY ETHERTON
- 27- RILEY PACK

Notes from Pastor Nancy

REV. NANCY GOWLER



*Good where we've been,
good where we're going to.
Good where we've been,
good where we're going to.*

— sung refrain, unknown author

Dear Disciples,

'Tis the season for end-of-the-year lists and resolution making for the new year to come. Spotify quantified my listening habits, with #SistersinLaw topping my podcast list and Engelbert Humperdinck crooning my most played song (*A Man without Love*, if you want to know. Thanks to Marvel's *Moon Knight* TV series for the ear worm.) Barack Obama has published his popular Spotify music playlist, along with his favorite films and books of 2022.

We love lists! There's a list for most human endeavors: best film lists, top TV shows, biggest political stories, most influential people, and more. The Los Angeles Business Journal publishes a list of lists, a compilation of the lists published during the year.

Perhaps it's a way of closing the books on a previous year. We manage to get the last bits of the year stashed into a stuffed file folder, tucking it away and promising to look at it again soon. All the while we know once the file drawer is closed, time will slip by and the folder moved to the back of our memories.

I am a sporadic list maker, returning to the practice when life's details threaten to become unmanageable. Often lists are boring—the grocery list scribbled on the back of a receipt or a packing list for my suitcase. Sometimes lists are for a future dreaming—creating Pinterest boards of places to travel, restaurants to dine at, hikes to try.

There is a poetry form of lists, and the first one I remember reading was Shel Silverstein's marvelous

poem, *Sick*. In it little Peggy Ann McKay offers the reasons she cannot go to school that day, reciting an impressive list of her ailments:

..."I have the measles and the mumps,
A gash, a rash and purple bumps.
My mouth is wet, my throat is dry,
I'm going blind in my right eye.
My tonsils are as big as rocks,
I've counted sixteen chicken pox
And there's one more—that's seventeen,
And don't you think my face looks green?..."

Have you made any lists for 2022? —moments of accomplishment, tasks left unfinished, or roads not taken? A compendium of joys or heavy griefs? Are you carrying into the new year a moving box filled with unnecessary regrets or grudges? What can you take with you into 2023 and what will you allow yourself to let go of? My favorite contemporary hymnwriter, John L. Bell, in the song, *Take This Moment*, uses the list poem form as a prayer to God for new beginnings. You can listen to the song on [YouTube](#).

*Take this moment, sign and space; take my friends around;
Here among us make the place where your love is found.
Take the time to call my name; Take the time to mend
Who I am and what I've been, all I've failed to tend.
Take the tiredness of my days; Take my past regret,
Letting your forgiveness touch all I can't forget.
Take the little child in me scared of growing old;
Help me here to find my worth made in God's own mould.
Take my talents, take my skills; Take what's yet to be;
Let my life be yours, and yet, let it still be me.*

—John L. Bell
(*Take This Moment*)

Whatever lists we are carrying from this year to the next, may the grace of God always be our companion on the way.

Pastor Nancy

History Corner

ANNE BUCKNER



Morehead Normal School and Moonlight Schools 1910-1923

A Continuing Look Back at MSU Beginnings

(an excerpt from [A Light to the Mountains](#), by Donald F. Flatt, pp 27-29)

As the Christian Church became more urbanized, the Christian Women's Board of Missions decreased financial assistance to schools it operated in rural areas and increased support of Bible Chairs in large universities and in its own colleges such as Butler, located in Indianapolis. Warrin O. Lappin, principal, reported the school's enrollment as only ninety-three, the smallest number in many years, in the first term of 1921-22. Forced to discontinue its first six grades of elementary school, Morehead Normal School was overstaffed with its ten faculty members in addition to Principal Lappin. And only three students—Christine Ellenor Gearhart, Mary Edward Riley, and Frances Hildreth Maggard, much later a member of the English Department at Morehead State—received high school diplomas in the final commencement exercise on Friday, May 19, 1922, in Burgess Hall. The church-related school had now seemingly fulfilled its purpose of improving social and educational conditions. Because of low enrollment and the production of so few graduates, Morehead Normal School chose not to open its door in the 1922-23 academic year. At the same time, talk began to circulate that Morehead might become the site of a public teacher-training institution to be located in Eastern Kentucky.

An aura of sadness filled the air as the faculty of the old Normal School held its final meetings. The school's ninety-three students included sixty in high school, nineteen in the eighth grade, and fourteen in the seventh grade. The beautiful penmanship of Inez Faith Humphrey, secretary for the faculty meetings, states that the first six grades had been eliminated. The next-to-last faculty meeting concerned the possibility of transferring the property of Morehead Normal School to the state so that it might become the campus of a new public institution. Principal Lappin used the last faculty meeting to read the bill concerning the creation of two new state normal schools.

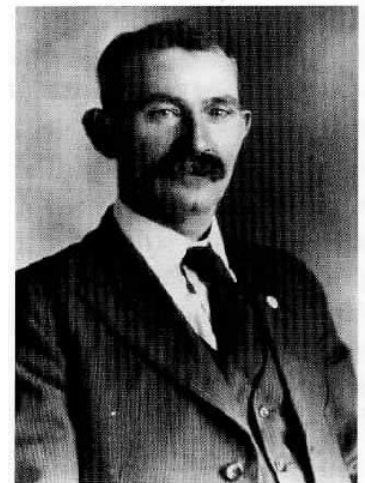
When everyone sang the last verse of the school's "Alma Mater" at the final commencement exercise in 1922, the words reflected not only the usual sadness of departing students but the somber last farewell to an institution that was fast fading away:

Normal, dear Normal, bless us now that we must part;

Remember, Alma Mater, keep us in thy heart.

Morehead Goes Public. The twentieth century brought a major change in the training of teachers in Kentucky with greater involvement of state government. In 1906 the state created two public normal schools—Eastern at Richmond and Western at Bowling Green. By 1920 a marked improvement in teacher training had taken place; however, the number of graduates did not meet the demand.

Neither Governor Edwin P. Morrow nor the Kentucky legislature was satisfied with the state's lack of progress in education. Appearing before the General Assembly in 1920, Morrow painted a dismal picture of Kentucky's public education system: "The deplorable condition of our rural school compels your immediate attention...Schools are taught in archaic buildings- -buildings without proper equipment, and -often without suitable playgrounds. Rural teachers are so poorly paid that many counties have been unable to procure the required number of teachers for their schools....Salaries paid to the teachers in rural schools range from \$35 to \$70 per month or from \$210 to \$420 per year. The inevitable consequence of failure to pay a living wage has been to drive from the profession its best materials, and fewer young men and women are choosing teaching as a profession."



State Rep. J. T. Jennings (Bath Co.) opposed Gov. Edwin P. Morrow who lobbied to locate the new state normal school in Paintsville.

Star Words for Epiphany

A SPIRITUAL PRACTICE FOR THE NEW YEAR



Inspired by the story of the Magi following a star, the practice of star words for Epiphany has become a common Christian prayer practice for a new year. Star words can serve as a guide, one more way to discover God in our world, dwelling alongside us.

This year we'll be receiving our star words in worship on Sunday, January 8. If you are unable to attend worship or would prefer a star be sent to you, contact the church office. We'll pick a word just for you.

There are optional weekly emails with reflection questions and prayer prompts to aid in your own spiritual discernment. Let us know if you would like to receive these weekly prayer guides.

Vespers return January 12

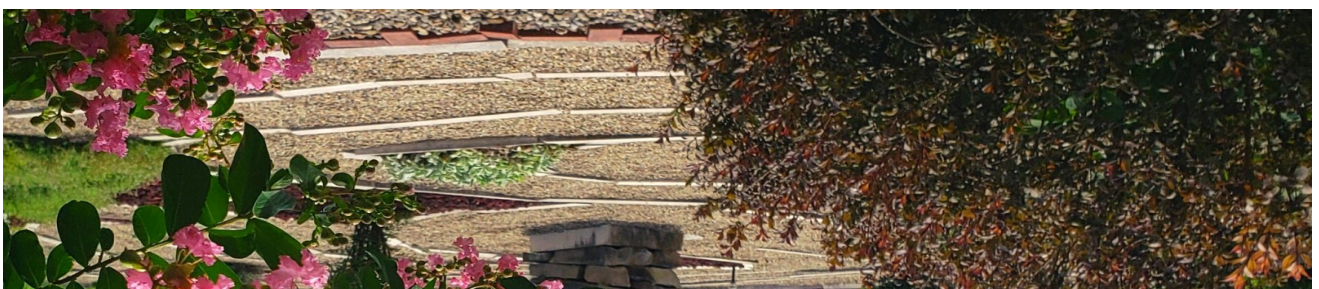
THURSDAYS 7:00PM VIA ZOOM

Looking for a way to deepen your spiritual journey in 2023? Consider joining our online vespers gathering. Thursday night vespers on Zoom return January 12 at 7:00pm. With the new year we will turn our reflections to the gospel of Matthew, with readings, prayers, and a time for reflection on art related to the gospel readings. Each week we end our time together with a celebration of communion.

To receive an invitation to Zoom Vespers, send us a message.



FIRST CHRISTIAN CHURCH
227 East Main Street
Morehead, KY 40351



Place
Stamp
Here