

THE ECHO

a newsletter of the First Christian Church of Morehead, Kentucky

President's column

MARY CLAIRE WILLIAMS



Greetings Church Family,

During the month of November, the youth partnered with the Outreach Committee to shop for the Thanksgiving baskets for Gateway Homeless Shelter. I had the privilege of accompanying them for this activity, and it filled me with hope and joy for the holiday season. The youth were so eager to pick out particular items and make sure we checked everything off the list. They were excited and humbled to be helping families who might need

a little extra assistance at this time. The following weekend Ellie and Alana joined over 200 youth from 22 churches across Kentucky for a fun lock-in at Malibu Jacks in Lexington. Thank you to FCC Mt. Sterling for allowing the girls to join their group for transportation and chaperoning. I say all of this about the youth because sometimes it can be hard to find hope especially this time of year. However, we need to look no further than our youngest disciples. They bring us hope, love, joy, and peace. Our youth represent the gifts given to us on that special day when Jesus was born.

Also, I would like to thank Jeff and Ronetta Brown along with all of the Outreach Committee for their hard work. This committee is always hard at work, but we especially appreciate their efforts during this busy time!

I wish everyone a Merry Christmas and joyful holiday season.



Photos from the November Kentucky Disciples Youth Lock-in at Malibu Jacks in Lexington.

This issue:

President's column
PAGE 1

Photo-A-Day Calendar
PAGE 2

Calendar
PAGE 3

Outreach Update
Choir & Bells
PAGE 4

Giving & Thanks
Pop Up Art Room
Advent Film Festival
PAGE 5

Pastor Nancy's note
PAGE 6

MSU History
PAGE 7

First Christian Church
227 East Main Street
Morehead, KY 40351

www.fccmorehead.org
(606)784-4836

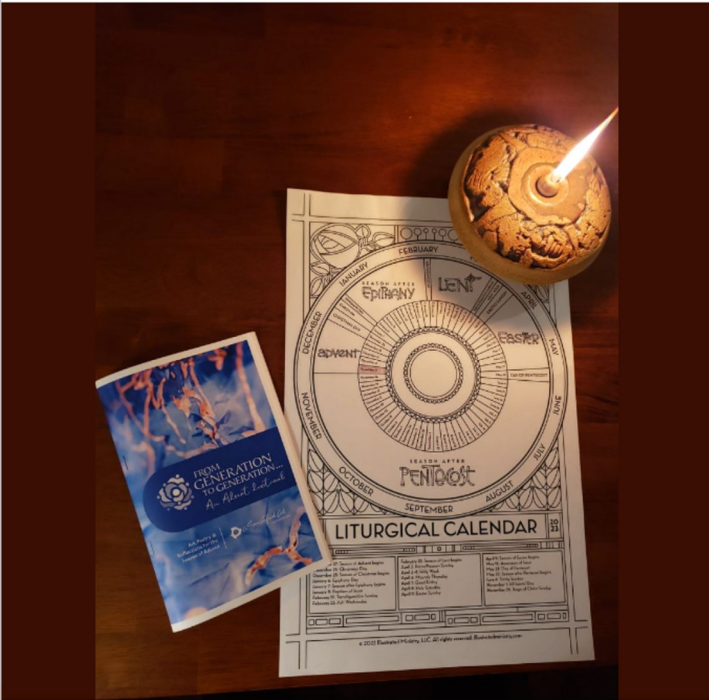


Creating an Online Advent Photo-a-Day Calendar

A SPIRITUAL PRACTICE WITH A CELL PHONE CAMERA

Using a camera and an eye to what's around you, the Advent Photo-a-Day project offers a contemporary spiritual practice to help you deepen your experience of the season. Looking for inspiration? Here are some sample posts from members of our congregation for Day 1 - Hope. You can search for the hashtags (#Advent2022, #adventphotoaday, #FCCMorehead) and discover what others are sharing. Follow along and add your own photos to the mix!

Hope
#Adventphotoaday
#FCCMorehead
"This Advent, may you remember that you belong - to a story etched into the wrinkles of time, to generations that have come before and will come after, to a love that won't let you go."
- "From Generation To Generation...An Advent devotional."



Hope
#Adventphotoaday
Sundays tend to be busy and the weather was iffy, but Stoney still had hope I would play ball this afternoon. (I did.)
#FCCMorehead



Finding hope at the Festival of Trees. Community members, including representatives from local businesses, schools, the hospital and more donate and decorate. The proceeds from the sale of these items directly benefits the construction of affordable housing by Habitat for Humanity of Benzie County. Building Homes and Hope Together.

#advent2022 #advent2022photoaday #fccmorehead #hope #buildinghomesandhopetogether



FROM GENERATION TO GENERATION... ADVENT PHOTO-A-DAY

Advent 1	Advent 2	Advent 3	Advent 4
11/27 - Hope	12/4 - Love	12/11 - Joy	12/18 - Peace
11/28 - Room	12/5 - Stay	12/12 - Breathe	12/19 - Threshold
11/29 - Foundation	12/6 - Brave	12/13 - Dream	12/20 - Solidarity
11/30 - Change	12/7 - Invitation	12/14 - Choices	12/21 - Gift
12/1 - Cultivate	12/8 - Rooted	12/15 - Bloom	12/22 - Yearn
12/2 - Beginning	12/9 - Silence	12/16 - Gratitude	12/23 - Healing
12/3 - Path	12/10 - Play	12/17 - Celebrate	12/24 - Wonder

#Advent2022 #adventphotoaday #FCCMorehead

FIRST CHRISTIAN CHURCH OF MOREHEAD, KY

December 2022

	Mon	Tue	Wed	Thu	Fri	Sat
				1	2 Office closed.	3
4 ADVENT 2 10:45am Worship 1:15pm Dessert Reception 2:00pm Christmas Cantata 7:00pm Advent Film Festival (Zoom)	5	6 7:00pm Women of the Bible (Zoom) Job 38-42	7	8	9 Office closed.	10
11 ADVENT 3 10:45am Worship 7:00pm Advent Film Festival (Zoom) Outreach Delivery	12	13 7:00pm Women of the Bible (Zoom) Discuss Elizabeth	14	15	16 Office closed.	17
18 ADVENT 4 10:45am Worship 7:00pm Advent Film Festival (Zoom)	19	20 7:00pm Women of the Bible (Zoom) Discuss Mary	21	22	23 Office closed.	24 10:00pm Christmas Eve Service
25 Christmas Day 10:45am Worship Newsletter articles due.	26 Christmas Day observed. Office closed.	27 7:00pm Women of the Bible (Zoom) Discuss Anna	28	29	30 Office closed.	31 New Year's Eve

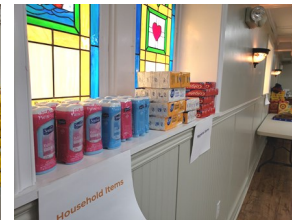
Holiday Outreach Spills Over

WITH RISING COSTS, OUTREACH STRETCHES DONATIONS TO SUPPORT FOLKS IN NEED

Food, household items, clothing, shoes, puzzles, toys, and so much more are filling up our Fellowship Hall as contributions continue to come in for our 2022 Christmas outreach project. Twelve families and ten senior households will receive these gifts on December 11. If you signed up for items, please bring those to the church by Sunday, December 4.

Prices for all items have increased this year, and financial support is still needed. Monetary gifts help buy shoes and clothes. This year we purchased a record 53 pairs of shoes this year. We're grateful for our local Shoe Sensation store, who works with us to get the best prices possible for our outreach project. Please indicate Holiday Outreach when you make your donations.

You can also sign up to be one of the deliverers, and be a part of sharing the Christmas cheer. Contact our Outreach chairpersons, Ronetta & Jeff Brown, or the church office for more information.



We Honor Our Graduates

SUMMER AND FALL 2022



Name: Kennealy Robert
School Attended:
Morehead State University
Degree: Bachelor of Arts
in Convergent Media
Future Plans: I plan to
pursue a career in
journalism and/or
broadcasting. I am the
fiancé of Jon Jenkins with a

spring wedding planned.

Interests: I love listening to podcasts and joking about bad movies with my dad.

Choir & Bells

GENNY JENKINS & SARAH CHANEY, DIRECTORS



Genny Jenkins
Music Director



Sarah Chaney
Bells Director

The music department is thrilled to share with you our Advent and Christmas musical plans.

First, on Sunday, December 4, join us for our Christmas Cantata at 2:00 pm (preceded by a dessert reception beginning at 1:15 pm).

Then, on December 11 we will welcome Cathy Schwab, Ann Colbert, Molly Carew, and Luann Parkansky for special music during our Sunday service. And on December 18, we will welcome Andrew Preston and Mary Morris.

We look forward to sharing with you all!

FCC's Turtle Walk Artist Announced

JENNY CONRAD

Morehead-Rowan County Tourism private jury has paired First Christian Church with artist Jenny Conrad and her colorful design. Conrad a resident of Paris, Kentucky, majored in art at Transylvania University and previously participated in Horse Mania, a similar public art program from LexArts in Lexington, Kentucky.



Advent Opportunities

Advent Pop-up Art Room open

Come early or stay late on Sundays during Advent and visit our pop-up Art Room. Each week we will have art projects related to the themes of Advent. Create an ornament for our tree in the sanctuary. There will also be special opening times of the art room during the week for you to drop in and add a little creativity time to your Advent journey.



Advent Film Festival

SUNDAYS, NOVEMBER 27-DECEMBER 18

Watch the film during the week and join us for the Sunday evening discussions. Message us for a Zoom link.



Sundays at 7PM

ADVENT FILM FESTIVAL



Week 1 - November 27
Descendant
(2022, Rated PG)

Netflix



Week 2 - December 4
Up
(2009, Rated PG)

Disney+, Amazon Prime, YouTube



Week 3 - December 11
Hidden Figures
(2016, Rated PG)

Freevee, ABC, Amazon Prime



Week 4 - December 18
Lunana: a Yak in the Classroom
(2019, NR)

Netflix, Apple+, YouTube

Watch the film on your own and then join the Zoom conversation on Sunday nights at 7PM.
Message us for a Zoom link.

FIRST CHRISTIAN CHURCH OF MOREHEAD, KY

Giving News

TREASURER'S REPORT NOVEMBER

General gifts and income	\$6,288.48
October 30, 2022	\$2,675.00
Expenses:	\$10,668.86

MACK FUND

For the Boiler Repair

Fran Helphinstine and Rob Sloss

For the Sign Base

Jack Whidden

THANK YOU

Dear Pastor Nancy, Mary Claire & FCC,

Thank you for your generous donation of Thanksgiving baskets to Gateway House! Thank you so much for your incredible generosity and concern for those we serve. Your kindness is not taken for granted.

Marilyn Smith and Paul Semisch, Gateway House



Notes from Pastor Nancy

REV. NANCY GOWLER



“LIKE A GREAT WATERWHEEL, THE LITURGICAL YEAR goes on relentlessly irrigating our souls, softening the ground of our hearts, nourishing the soil of our lives until the seed of the Word of God itself begins to grow in us, comes to fruit in us, ripens in us the spiritual journey of a lifetime.”

—Joan Chittister

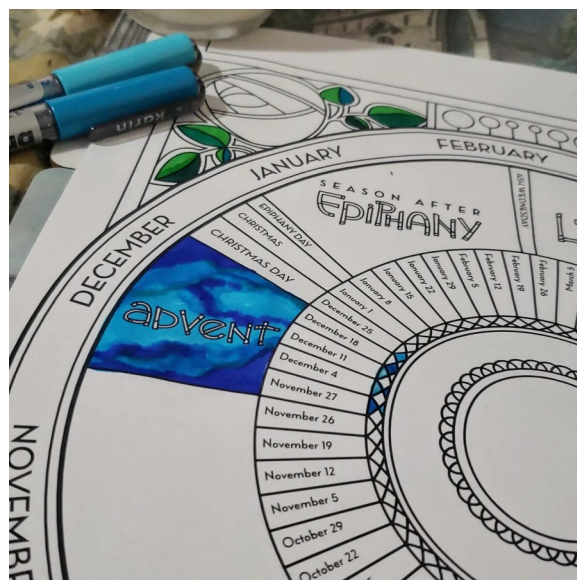
The Liturgical Year: The Spiraling Adventure of the Spiritual Life

As winter draws near, the nights grow longer and the hours of sunlight reach their shortest length of the year, we feel time in our bones. Often what we feel does not match the time on our clocks, when darkness falls so early. Surely it's time to head to bed, we may think, only to check the clock and in shock discover it is only 6:30pm! (Or, maybe that's just me!) We lean on our watches or phones to know the time, to help determine where we are in the movement of the day.

The ancient Greeks had two words for time, *chronos* and *kairos*. *Chronos* is the kind of time we can quantify or measure, such as “The concert will last two hours” or “We averaged 65 mph on the way home.” *Chronos* is the time we see on our watches, the time we follow as we go to work or pick up the kids from school. We mark such time in minutes and hours, days, weeks, and years.

The second word for time, *kairos*, concerns the meaningfulness of time, the potentiality of moments, expectancy of events. *Kairos* is the time of moments and breakthroughs, even interruptions.

The church follows a calendar, with regular dates and festival times, which has points of connection with our *chronos* calendars. The new church year began on Sunday, November 27, with the first Sunday of Advent. There will be four Sundays of the season leading up to



Christmas Day. Those dates are measurable, we can mark them on our personal calendars, keep track of those Sundays, note that Christmas Day is on a Sunday this year, too.

Yet, the church's liturgical calendar holds within it the possibilities of *kairos* time even as it marks the holy days of the Christian year. The church calendar invites us into an alternative plotline for our days, as it intentionally builds in times of preparation and repentance, with moments of remembrance and celebration. As Peter Leithart describes it, “the church calendar isn't just a teaching device. It places us in the time of Jesus, and works the life and times of Jesus into us.” As we follow the rhythms of the liturgical year, we find a counterpoint to the secular calendar, a richer way of keeping time, walking alongside the stories of Jesus and diving deep into the ways of discipleship.

This year we have liturgical calendar posters available for you. Take one home, put it up somewhere you can see it. Color the poster with your family. Explore the colors and the times of the church year and see how time changes and how keeping liturgical time may even change you.





Morehead Normal School and Moonlight Schools 1910-1922

A Continuing Look Back at MSU Beginnings

(an excerpt from [*A Light to the Mountains*](#), by Donald F. Flatt pp 25-27)



J. Wesley Hatcher (photo from Berea College, *The Chimes*, 1946)

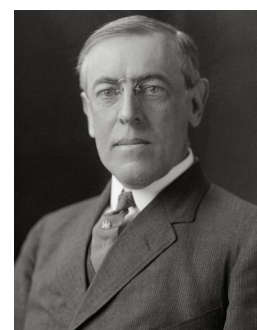
World War I obviously made its presence felt at Morehead Normal School. Principal J. Wesley Hatcher stated that after the declaration of war against Germany, a “spirit of anxiety and gloom affected us. Many of our boys have enlisted and others are expecting conscription, but we are trying to keep hope and faith and face the situation presented by our national crisis in the spirit of true patriotism.” He had collected the names of 48 Morehead students serving in the armed forces, but “doubtless there are many others.” Despite losses in the student body, in 1917-18 a dozen students received eighth-grade certificates and four individuals were granted high school diplomas, including Ruth Anglin, who later married Warren C. Lappin.

But the school was even more seriously affected when hit by measles in 1917 and by influenza the following year. The influenza epidemic, which killed over twenty million people throughout the world, shut down the school for three months in the fall of 1918. Morehead Normal School changed principals in the fall of 1919. Hatcher left after six years to pursue additional graduate work in order to improve his career opportunities. But the school was optimistic with the arrival of W. O. Lappin as its new principal. The Lappin clan, living in Illinois, contributed many leaders to the Christian Church during the first half of the twentieth century. After the close of the war enrollments rose, and crowded conditions forced the housing of four boys in each room at Withers Hall and filled the girls’ dormitory.

Students of Morehead Normal School came from a remote but beautiful region. Area roads were so crude that “it took nearly all day” to make the trip from Morehead to Flemingsburg. On a trip through Eastern Kentucky, Woodrow Wilson once wrote:

“No one who has ridden, as I have, through the silent lengths of that great region, can fail to have his imagination touched by what he has seen, the almost limitless forests lying there untouched upon the long slopes of the towering hills, as if they had been there keeping their counsel and holding their secrets ever since the Creation; and here and there in the little clearings the houses of a secluded people, as reticent as the hills above them, slow to speak, their eyes watchful, holding back the secrets of their quiet life.”

Morehead Normal School maintained strict rules and regulations governing social and private lives of students. All mail, incoming and outgoing, was censored; girls could not correspond with people living in town and were required to have a chaperone when they left campus for any reason. Wearing jewelry was frowned upon as “out of harmony with school life.” School authorities made it clear that the use of tobacco and intoxicating drinks, possession of concealed weapons, and profane and indecent language were forbidden. The 1917-18 catalogue made it clear that “those who do not desire the regulated life thus provided for are advised to go elsewhere” since we are “not prepared to act as guardian of the idle, listless, or lawless.”



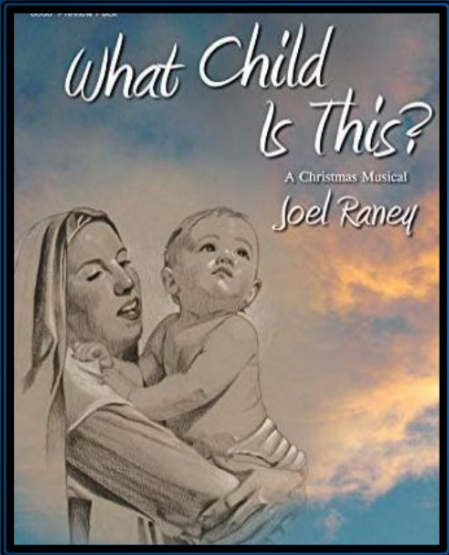
Woodrow Wilson
U. S. President, 1913-21

Cantata and Christmas Eve Services

DECEMBER 4 AND DECEMBER 24

What Child Is This?, A Christmas Musical will be performed by the FCC Choir and members of the Jesus Our Savior Catholic Church on Sunday, December 4 at 2:00pm. There is a dessert reception at 1:15pm.

Our traditional Christmas Eve Service will be on Saturday, December 24 at 10:00pm. Make plans to join us for these meaningful services as we celebrate the birth of Jesus the Christ.



What Child Is This?
A Christmas Musical
Joel Raney

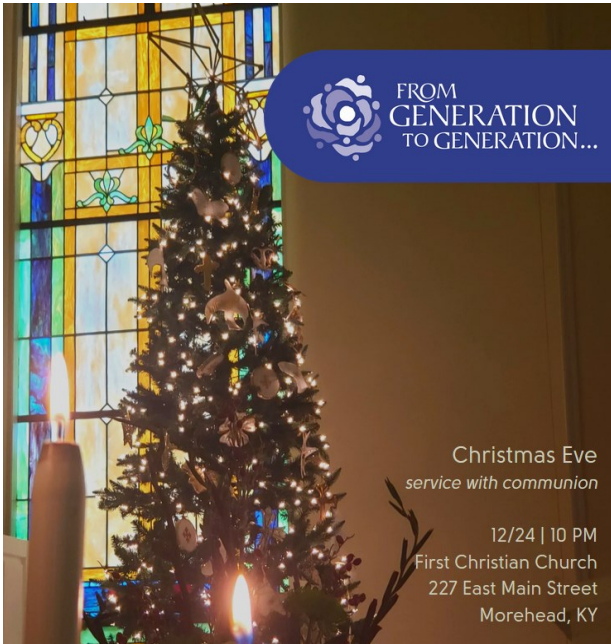
Presented by
First Christian Church
and friends

Dessert Reception
1:15 PM

Performance
2:00 PM

December 4, 2022

FCC Morehead
227 East Main Street



**FROM
GENERATION
TO GENERATION...**

Christmas Eve
service with communion

12/24 | 10 PM
First Christian Church
227 East Main Street
Morehead, KY

FIRST CHRISTIAN CHURCH
227 East Main Street
Morehead, KY 40351

