

In essentials, unity. In non-essentials, diversity. In all things, charity.

Contents

- 3-Our Beginnings—A History
 - William Withers Donates Funds
- 4-Men’s Spiritual Life Retreat
- 5-Watchcare Ministry
 - Donations & Birthdays
 - Opportunities for Connection
- 6-Outreach Ministry
- 7-Calendar
- 8-FCC Prays for One Other
 - Labyrinth Garden Bricks



The Echo

First Christian Church of Morehead

Volume 21 Issue 8

August 2021



Yard Sale is Back

Saturday—September 18
9:00-4:00pm

Make plans now to attend our annual Yard Sale during Morehead’s Arts & Eats Festival. There will be new and gently used items donated by members of the congregation. If you have donations, please bring them in on Wednesday or Thursday, September 15 or 16 from 8:30-1:00pm.

Message from the President

Greetings Church Family,

What a blessing it has been to worship together in person this past month. On Sunday the 11th our special guest musicians were Thomas Pappas and Gina Pizzoli. Postlude performance was so moving that it brought the entire congregation to our feet. I want to say a special “Thank You” to them both and welcome them back anytime.



Anne R. Buckner
President

Our Labyrinth has continued to bless the community this Spring and Summer as all who have passed by have been welcomed to God’s Glory. We have had many comments about our beautiful flowers and bushes. I want to say a big



THANKS to our “Garden Angels” who keep it looking so beautiful all year round. Our new sign is up and looks awesome!

Message p4

Notes From Pastor Nancy

Living into our values means that we do more than profess our values, we practice them. We walk our talk — we are clear about what we believe and hold important, and we take care that our intentions, words, thoughts, and behaviors align with those beliefs.



Reverend Nancy Gowler

—Brene’ Brown

Planning meetings are seldom glamorous. Calendars are a must. Events and projects will get listed. Names of potential volunteers are floated. To-do lists grow. If all goes as designed, everyone goes home with their share of tasks to complete. Planning meetings are a necessary part of the life of any organization—business, nonprofit, or church. We’ve all been part of planning sessions, some productive, some perfunctory, and others fruitless. I don’t know about you, but just writing those sentences make me tired!

My response may have something to do with those “planning for planning’s sake” meetings I’ve been a part of, when everyone there is already overtaxed, and the last thing they want to do is add to their workload. People leave such meetings with their shoulders sagging and their hearts heavy. It’s a recipe for burnout and disappointment.

Planning sessions don’t have to be that way. With focus, intentionality, a wee bit of flexibility, and a whole lot of grace, folks with a common purpose can come together to map out their next steps, breathe new life into ongoing projects, and imagine new endeavors. Productive planning starts with knowing the groups core values and using those values to design and evaluate the work of the group.

Notes p2

I've spent much of my time this past year listening, paying attention to stories of what you've done as a congregation, what you miss, what you hope for. It's been a challenge in a pandemic, and I hope to have many more conversations to come. I've been listening for what the core values of this congregation are. Sometimes those values are explicitly named, other times they show up as common threads in activities and projects in which people are invested. Every church community is different.

Here's a start at what I'm learning about FCC Morehead, in no particular order.

- **Communion** is central to your identity—not a surprise for Disciples! Communion centers you individually and is a powerful ritual connecting you with others.
- **Compassion** You take seriously Christ's call to care for the least of these—particularly children, vulnerable seniors, and low-income families. This compassion is lived out in annual outreach projects and in your responses to issues of social injustice.
- **Education** You value education, you see the need for and benefit of good public education for everyone. You also understand the importance of education for spiritual formation and faith development.
- **Beauty** You appreciate the role of beauty in our lives and how the arts inspire and nurture faith.
- **Creation** Individuals in the congregation are committed to caring for the earth in their personal practices and the congregation is growing in its understanding of our role together as stewards of creation.
- **Hospitality** You understand the welcome you have experienced at the communion table is a welcome we are called to extend to all, regardless of age, race, ethnicity, nationality, socio-economic status, gender, sexual orientation, marital status, mental or physical capacity.
- **Community** You enjoy one another! You miss getting together regularly and you welcome opportunities to connect.
- **History** As one of the founding churches in Morehead, you recognize the importance of being rooted in this place, of knowing and sharing the stories of the region, and of understanding how the past influences our present day.
- **Practicality** You want to know what you do makes a difference. Only a practical congregation could proclaim it's "Undie Sunday"!

My list is incomplete. What do you think of it? Any thing you would add? Which ones do you think are core values of our congregation? Any questions about how I see these values in our congregational life? When the congregation is clear about its values, we can focus the planning process. Planning sessions can take on new life, as we evaluate, dream, and design our activities through the lens of our core values.

In a few weeks FCC ministry leaders and volunteers will come together for an annual planning workshop. We'll focus on our values and how what we choose to focus on in the coming year reflects those priorities. I invite all of you, whether you're a part of that planning meeting or not, to pray for our work. May the Spirit guide us as we seek to be faithful to God's call for us here and now.

With Christ's grace and peace,

Pastor Nancy

Disciples Websites

[Cane Ridge Meeting](#)
[Disciples News Service](#)

[Christian Church \(Disciples of Christ\)](#)
[Lexington Theological Seminary](#)

[Disciples Home Missions](#)
[Mission Behind Bars and Beyond](#)

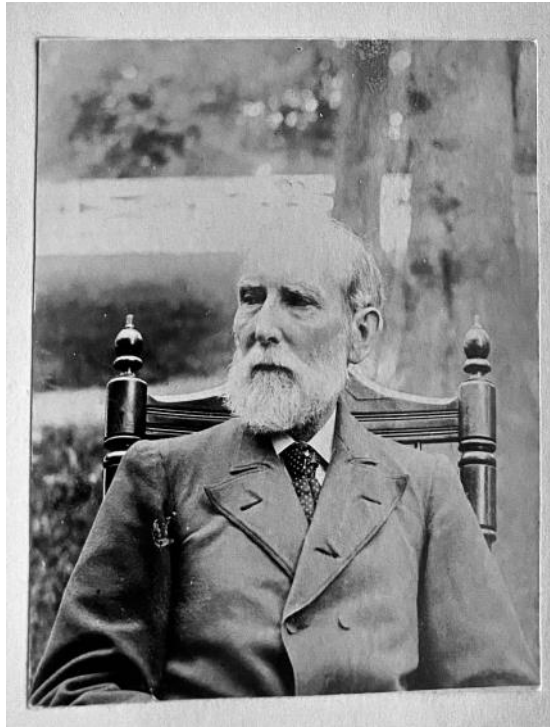
Our Beginnings—A History and Comment

Morehead Normal School and First Christian Church by Anne Reynolds Buckner

General Withers Donates Funds for Land

excerpts from *Our Morehead KY., Mountain Mission School*, publication by Christian Woman's Board of Missions, Indianapolis, Indiana, [Morehead State University Archives](#)

William T. Withers was moved to establish a school in Rowan county. He selected the State Board of the Christian Church of Kentucky, of which he was a member, as the organization through which funds for the school should pass and by which the school should be conducted. Mr. Withers contributed five hundred dollars annually to the support of the school until his death, after which the gift was continued for two years by his estate. The first step in the organization of the school was the employment of F. C. Button and his mother, Phoebe E. Button, in September 1887. The school began with one pupil in attendance in attendance in October of the same year. A wise choice was made in the selection of



William T. Withers

Photo courtesy of Morehead State University Archives

Mr. Button and his mother.

Professor Button is know and loved for his great worth. With the exception of three years spent with the church and school at Corbin, Kentucky, he has been with the school since its beginning. Of his mother one who is well qualified to speak says:

“She is one of the best women I have ever known; I have never seen her superior or her equal. In her movements among the people, in their homes, by kind words and deeds, she became known and loved by all the community. Not to be profane, she was positively angelic in her character and disposition.”

In 1890 the grounds and money for the first school building were given by Judge Thomas F. Hargis, of Louisville, KY who was raised in Morehead. In 1892, Paph Julian and wife were employed to take charge of the school. F. C. Button was appointed to raise funds for the erection of a new school building and dormitory. Robert Hodson, of Oquawka, IL gave the sum sufficient to insure the erection of the dormitory and the building was named “Hodson Hall” in honor of his daughter.

This photograph of General W. T. Withers was taken in the yard of his famous stock farm, FAIRLAWN, at Lexington, KY a few years before his death and when he was suffering from wounds he received in Mexico where he served his country with distinction. He was also wounded at “Champion Hill” where he was a Confederate General during the siege of Vicksburg—1862.



Withers donated funds for the establishment of a school in Rowan County. The Withers family has a dedication panel in the FCC sanctuary.

Photo by Anne Buckner

Do not consider his appearance or height, for I have rejected him; the LORD does not see him as man does

~ **For man sees the outward appearance, but the LORD sees the heart. 1 Samuel 16:7** ~

Message From The President p1

Our parking lot has been sealed, and will soon be striped and numbered. We currently have 2 spaces rented but would like to rent more. If you know someone who is interested in renting a space, please have them call the church office.

Finally, I want to mention the connection our church has with Morehead State University. I have a passion to learn more about the history of this partnership and as I do, I will pass on that information with you all. Each month I will be sharing stories and pictures of Who, What and Why First Christian Church (Disciples of Christ) and Morehead State University came into existence. I hope you will enjoy it and help keep the stories alive in our community for years to come. (Editor: Anne's article is on page 3.)

Sincerely,

Anne R. Buckner
arbuckner64@yahoo.com
cell 606-356-2011

Claiming Sacred Spaces

Regional Men's Spiritual Life Retreat, Aug 13-15

Rev. Bruce Barkhauer will lead this year's Men's Spiritual Life Retreat at St. Meinrad Archabbey. Bruce currently serves as the Minister for Faith and Giving with the Christian Church (Disciples of Christ). He is also the author of *America's Holy Ground: 61 Faithful Reflections on Our National Parks* and *America's Holy Sites: Faithful Reflections on Our National Monuments and Historic Landmarks*.



[More about Rev. Barkhauer at Chalice Press.](#)

Online registration is now available.

Registration is \$50 plus food and lodging at St. Meinrad. If you would prefer a paper registration form, contact Terry Royster at (859) 233-1391.

Invite someone to join you!

[Register online now.](#)

Blast from the Past



@1957. Jane Young Holbrook with her Sunday School class. Members are Mike Rose, Diane Allen, Jim Fred Cassity (next to Jane), Leslie Smith, Becky Ewalt. Can anyone identify names with the girls? Thank you to Anne for supplying the picture.

Find more FCC pictures [HERE](#).

[Learn More](#)

Note
The public parking will not affect anyone holding an FCC parking permit.

**Welcome back
Morehead State University
Students**

WATCHCARE MINISTRY

What is a watchcare ministry, and is it biblical?

A “watchcare” or “watch care” ministry is a program in some churches allowing believers from other congregations to connect with their ministry without requiring full membership. Watchcare programs allow others to identify with a church, participating in worship, discipleship, fellowship, evangelism, and service, without transferring membership from their home church.

At First Christian Church of Morehead, we call those under Watchcare our affiliate members. It is designed to provide temporary, conditional, or unofficial association with a local church and is suitable for in- or out-of-state college students.

August



- 5- Joyce Hart
- 8- Ronetta Brown
- 10- Kaitlyn Paschall
- 17- Jeff Bizzel
- 20- Natalie Mineer
- 27- Adrian Swain

**July Treasurer’s
Report**

Income is \$8,576.15.
Expenses are \$8,123.48.

Mack Fund

Donation

*in Memory of
Catherine J. Rogers*

\$3,000.00

from

The Estate of Catherine Rogers

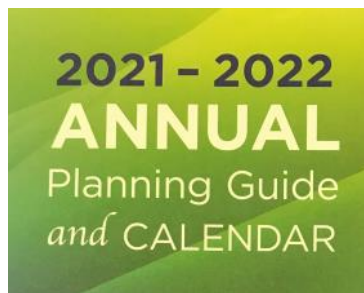
Annual Planning Meeting

Sunday, August 8

1:30-3:30pm

Who: Officers & Committee
Chairs

Where: Fellowship Hall



Bible Quiz

Which king was called a man after God’s own heart?

- A. Saul
- B. David
- C. Solomon



Answer: David A King After God's Heart

**Opportunities for
Connection**

Women of the Bible Study
via Zoom

Tuesdays 7:00—7:30pm
Contact Sarah Chaney by email
sarah.chaney78@yahoo.com
or call (606) 207-2421.



VESPERS
via Zoom

A time of song
& prayer

Thursdays
7:00pm

Vespers includes music, prayer, and meditation on artwork revealing God’s word. Communion is a part of the service, so have some bread or cookie, water or liquid, if you would like to partake. [Contact office for Zoom Invitation.](#)



**We welcome those who want
to join committees.**

Evangelism Committee
Mary Claire Williams @
(606) 776-8430

mc.williams@moreheadstate.edu

Creation Care Committee

Mark Etherton @
606-776-1745

ginn1@windstream.net

Education Committee

Sarah Chaney @
606-207-2421

sarah.chaney78@yahoo.com

Nothing can separate
us from the love of God.

[Romans 8:38-39](#)

Outreach Ministry Updates

GEARING UP FOR BACK-TO-SCHOOL

Ronetta & Jeff Brown, Co-Chairs

Undie Sundays Return

The Outreach Committee will be conducting an underwear drive in August for all Rowan County Family Resource/ Youth Service Centers. Bring in as many items as you wish, in any sizes. A tub for donations will be near the downstairs entry.

ALL sizes of underwear are needed:

Men's - small, medium, large, XL, 2XL

Women's- small, medium, large, XL, 2XL

Boys - small, medium, large, XL



Water Bottles for Middle School

Rowen County Middle School needs new, CLEAR, reusable water bottles, 20 oz or greater.

Please leave your donations in the designated tub near the downstairs entry.

Snack Backpacks

Snack Backpacks will continue this school year. Our main source of funding for this project is the Kroger Rewards. We currently have 37 families participating in the rewards. Last school year, we earned a total of \$532.97 in Kroger Rewards. We spent a total of \$2,909.24 purchasing food items for the snack backpacks, which served approximately 70 needy Rowan County students. This is an expensive, yet critical program for the children in our community. If you feel led to help, you can make your donations, earmarked "Backpacks" to FCC Outreach. Also, if you haven't signed up for Kroger Rewards, please do so, and designate FCC Morehead as your



Gateway Baskets



Housewarming Baskets for Gateway House will continue through November. Please place donated items on the table or floor in the Adult Classroom on the Ground Floor.

A Word of Thanks

Thanks to the families of John Philley and Jack Landreth for donating medical items for the elderly. Many of these folks live on a fixed income and cannot afford basic medical supplies. Your donations are greatly appreciated!

First Christian August 2021

Sunday	Monday	Tuesday	Wednesday	Thursday	Friday	Saturday
August 1 Rev. Nancy Gowler 10:45am Worship Pray for Elizabeth Ash.	2 Pray for Jackie Bailey.	3 Women's Bible Study via Zoom 7pm Pray for Keyairrah Bailey.	4 Bell Choir 5pm Pray for Stacy Baker.	5 Worship Committee Mtg 3pm Evangelism Committee Mtg 6pm Vespers via Zoom 7pm. Pray for Deb Eastwood.	6 Office closed. Pray for Yvonne Baldwin.	7 Disciples Virtual Gathering 11am Pray for Joe Barrett.
8 Rev. Nancy Gowler 10:45am Worship 1:30pm Annual Planning Meeting Pray for Chase Barnett.	9 Pray for Jean Battson.	10 Women's Bible Study via Zoom 7pm Pray for Jeff Bizzel.	11 Bell Choir 5pm Pray for Alta Blair.	12 MSU Move In Vespers via Zoom 7pm Pray for Maggie Miles.	13 MSU Move In Office closed. Pray for Ned Breschel.	14 Pray for Ronetta Brown.
15 Rev. Nancy Gowler 10:45 Worship Pray for Jeff Brown.	16 MSU classes begin. Pray for Anne Buckner.	17 Women's Bible Study via Zoom 7pm Pray for Alana Sholar.	18 Bells 5pm Choir 7pm Pray for Wayne Caldwell.	19 Rowan Co Schools classes begin. Vespers via Zoom 7pm Pray for Hedy Caldwell.	20 Office closed. Pray for Alicia Carter.	21 Pray for DeWayne Carter.
22 Rev. Nancy Gowler 10:45am Worship 12pm Elder's Meeting (Newsletter articles due) Pray for Brian Carter.	23 Exec/Full Bd Mts in person 6:30/7pm Pray for Eric Carter.	24 Women's Bible Study via Zoom 7pm Pray for Jim Fred Cassity.	25 Bells 5pm Choir 7pm Pray for Rex Chaney.	26 Vespers via Zoom 7pm Pray for Sarah Chaney.	27 Office closed. Pray for Lee Chaney.	28 Pray for Brenda Combs.
29 Rev. Nancy Gowler 10:45am Worship Pray for Becky Davison.	30 Pray for Mike Dobranski	31 Women's Bible Study via Zoom 7pm Pray for Ginny Ehernton.				

First Christian Church
(Disciples of Christ)

Rev. Nancy Gowler, Minister
Genny Jenkins, Music Director
Genny Jenkins, Keyboardist
Sarah Chaney, Bells
Mia Caudill, Nursery
Open, Youth
Barbara Marsh, Secretary
227 East Main Street
Morehead, KY 40351
606-784-4836
Monday-Thursday 8:30-1pm
Email: fccmky@gmail.com
Website: www.fccmorehead.org

www.facebook.com/fccmorehead

Join us for in-person
& livestream
Sunday Worship
Service @ 10:45am



<https://www.flickr.com/photos/139711677@N02/>



www.instagram.com/fccmorehead/



www.youtube.com/user/TheInterper

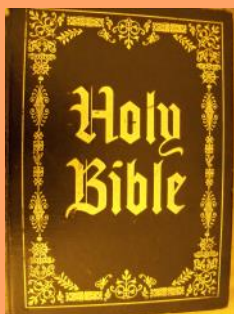


www.twitter.com/fccmorehead



Bible Lectionary Readings

Disciples of Christ



August 1—John 6:24-35
August 8—John 6:35, 41-51
August 15—John 6:51-58
August 22—John 6:56-69
August 29—Mark 7:1-8;
14-15, 21-23

Congregation Prayer Practice

CULTIVATING A SPIRIT OF LOVE



As part of its mission to "to maintain the closest possible contact with the entire church membership to the end that each church member may function effectively in the work of the church and in a spirit of love and comradeship," the Evangelism Committee would like to encourage the church to intentionally

think of each other in prayer. To this end, continuing in August, there will be an individual or intention on each day of *The Echo* calendar to include in your personal prayers.

AUGUST 1	2	3	4	5	6	7
Pray for Elizabeth Ash	Pray for Jackie Bailey	Pray for Keyairah Bailey	Pray for Stacy Baker	Pray for Deb Eastwood	Pray for Yvonne Baldwin	Pray for Joe Barrett
8	9	10	11	12	13	14
Pray for Chase Barnett	Pray for Jean Battson	Pray for Jeff Bizzel	Pray for Alta Blair	Pray for Maggie Miles	Pray for Ned Breschel	Pray for Ronetta Brown
15	16	17	18	19	20	21
Pray for Jeff Brown	Pray for Anne Buckner	Pray for Alana Sholar	Pray for Wayne Caldwell	Pray for Hedy Caldwell	Pray for Alicia Carter	Pray for Dwayne Carter
22	23	24	25	26	27	28
Pray for Brian Carter	Pray for Eric Carter	Pray for Jim Fred Cassity	Pray for Rex Chaney	Pray for Sarah Chaney	Pray for Lee Chaney	Pray for Brenda Combs
29	30	31	SEPT 1	2	3	4
Pray for Becky Davison	Pray for Mike Dobranski	Pray for Ginny Etherton	Pray for Mark Etherton	Pray for Raven Lynn Evans	Pray for Larry Fannin	Pray for Loretta Fannin

The labyrinth garden contains bricks with congregation names. They are an integral part of the spiritual presence when walking the labyrinth, resting on a bench, or enjoying the fragrance and beauty of the flowers, shrubs, and trees. Come rest awhile. The dedicated members and friends who donated the memorial bricks are remembered and loved.

